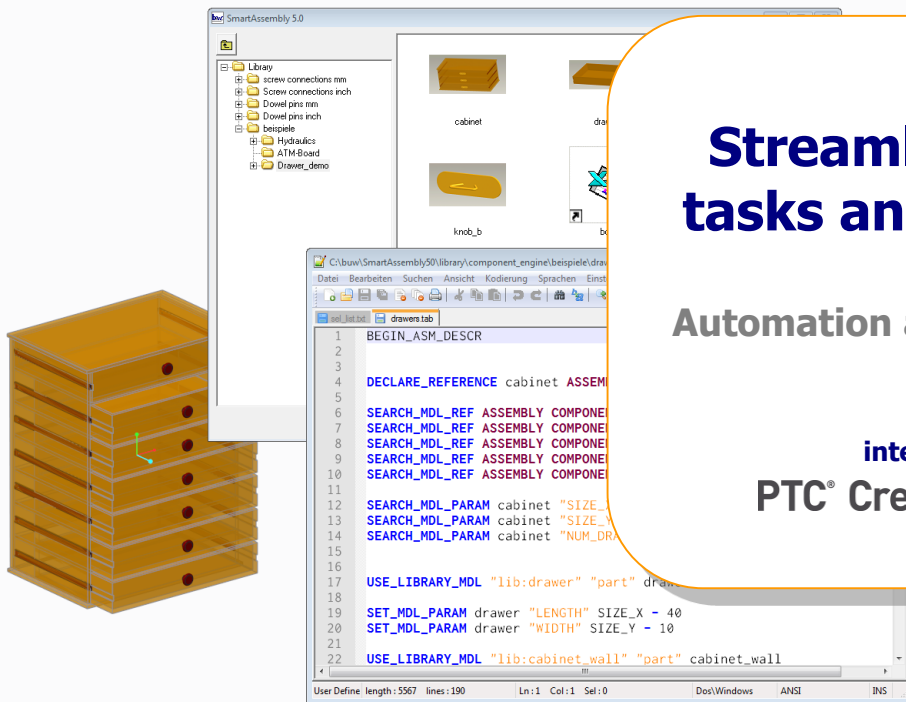




SmartAssembly



Streamline design tasks and processes

Automation at your fingertips

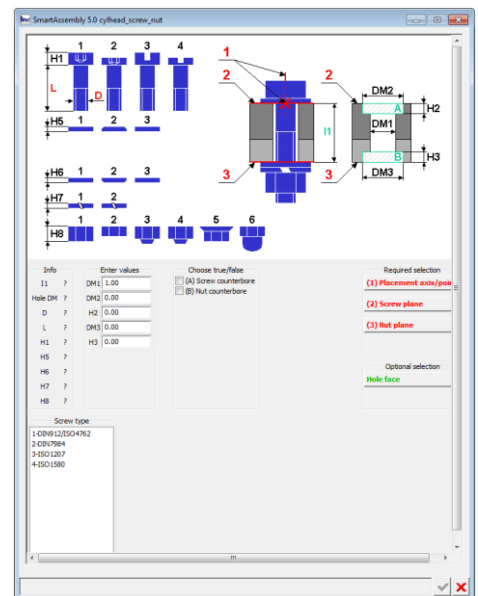
**integrated in
PTC® Creo® Parametric™**

You'd like to ...

- ... increase your productivity
- ... implement your design and configuration guidelines
- ... minimize the settling-in period for new users
- ... focus on your creative design work while automating repetitive tasks
- ... document your design know-how

SmartAssembly provides ...

- ... easy creation of rich graphical user interfaces
- ... the ability to include semantic information with your models, e.g. parameters
- ... means for creating, modifying, deleting and analyzing models, drawings and features
- ... advanced search for any kind of information
- ... integration with MS Word, MS Excel, ODBC databases, file systems, external programs and many more



Supported on: Microsoft Windows XP, 7, 8 (32/64 bit)
Available for: Pro/ENGINEER WF 2.0 - 4.0,
 Creo Parametric 1.0 - 3.0
Compatibility: Intralink 3.4, 8.0, 9.0,
 Windchill PDMLink 8.0, 9.0